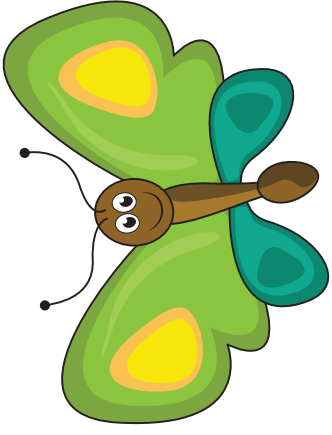


# Play-Doh Letter Formation Mat

Use play-doh to practice shaping letter formation.



2

The image shows a handwriting practice mat with a blue top line, a dashed middle line, and a brown bottom line. On the left, a large green number '2' is positioned above a green starting dot on the blue line. To the right of the dot are two large, hollow letters: 'B' and 'D'. Each letter has a green arrow indicating the stroke direction: a vertical line down from the top, followed by two rounded humps for 'B' or one hump for 'D'. A dashed line and a solid line are positioned above and below each letter to guide the student's work.



26 mats in color